

CERTIFICATE OF LOCATION OF GOVERNMENT CORNER

NORTHEAST Corner of Section 2, Township 105 N, Range 39 W, 5th P.M.

STATE OF MINNESOTA, County of MURRAY

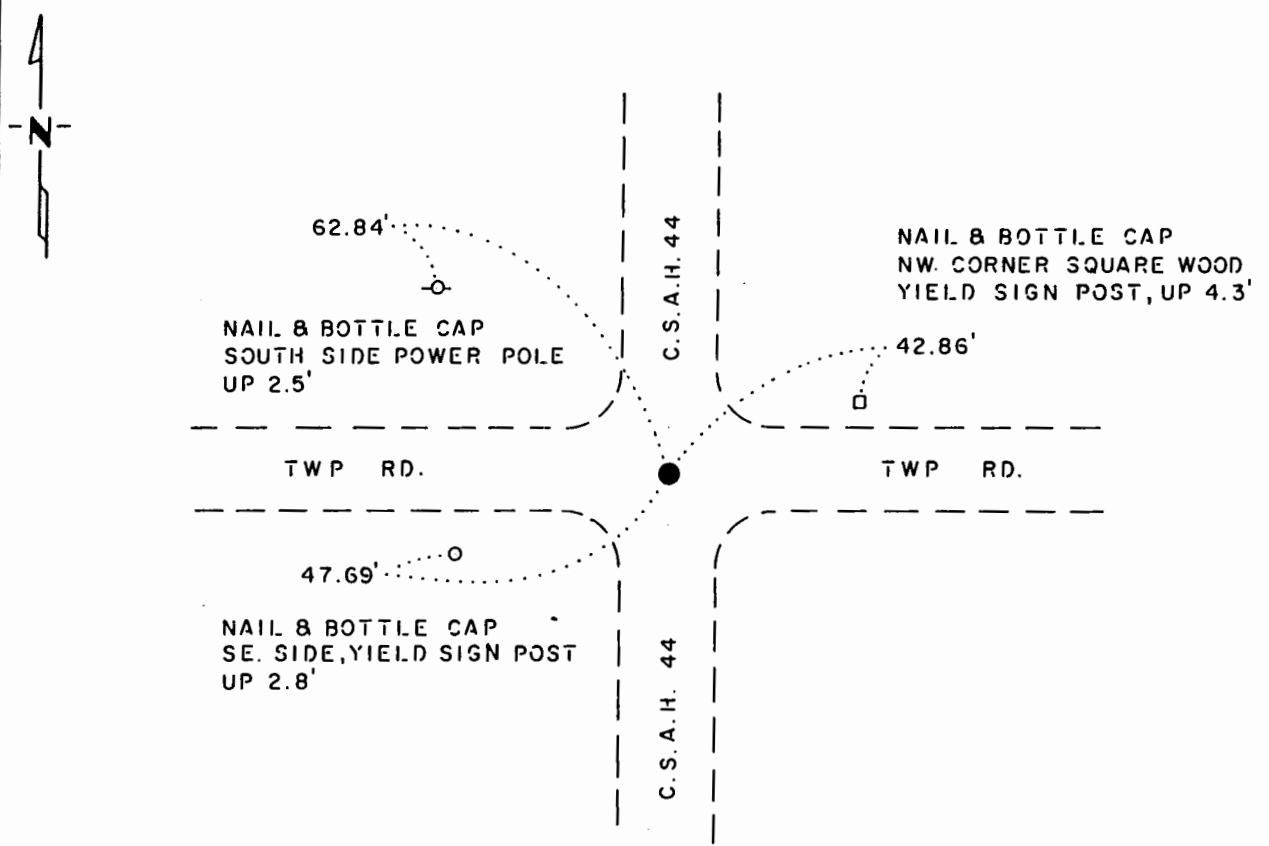
At the corner location shown on the sketch:

On 10-9-75 found a 3/4" DIAMETER IRON ROD, DOWN 0.2'
DATE

left monument as found, lowered monument, removed monument (explain)

On _____ placed a _____
DATE

SKETCH OF REFERENCE TIES



Statement of evidence relative to this corner location is on back of page.

J. B. M. 3-22-85
G-158

I hereby certify that this document and the data contained herein was prepared by me or under my direct supervision.

Bruce W. Shepard SIGNATURE 12/20/85 DATE

Registration No. 17003

- Land Surveyor, Professional Engineer
- County Surveyor, County Engineer

OFFICE OF THE COUNTY RECORDER
County of _____

I hereby certify that this document was filed in the Co. Recorders office at _____ M. on the _____ day of _____ A.D., 19 _____

County Recorder _____

By _____, Deputy

DOCUMENT NO. _____

Northeast Corner Section 2, Township 105 North, Range 39 West

This corner was originally established by the U. S. General Land Office survey in 1861. The government notes show:

set post, drove charred stake, made mound of earth and sod with trench and pits as per instructions.

In October 1975, the DNR Bureau of Engineering contacted the following for corner information:

Murray County Offices of the Recorder and Highway Engineer
Sioux Engineering of Windom

The following information was obtained from the County Recorder's Office:

A Surveyor's Record Book contains a survey done in 1903, surveyor not indicated. Survey shows that corner was established and a stone was set in grade to mark its location. Corner is shown:

2642.5 feet from the north quarter corner of Section 1

2642.5 feet from the north quarter corner of Section 2

2662 feet from the east quarter corner of Section 35

A Surveyor's Record Book contains a survey, date and surveyor not indicated. Survey shows a stone at corner with the following ties:

reference point - tack in blazed 10" cottonwood tree, southeast,
46.7 feet

reference point - tack in northwest fence post, 33.2 feet

A Surveyor's Record Book contains a survey done in 1927, surveyor not indicated. Survey shows an iron stake at corner.

A Surveyor's Record Book contains a survey done in 1936, surveyor not indicated. Survey shows a concrete stone at corner with the following ties:

reference point - tack in corner post, northwest, 41.9 feet

fence running west 23.5 feet north of stone

reference point - blazed box elder, southeast, 71.6 feet

The following information was obtained from the County Highway Engineer's Office:

A book of field notes dated 1967 show that a small bridge spike was found at corner and a 3/4" iron pin was set in its location. The following tie is shown to corner:

reference point - nail and cap in power pole, northwest,
62.5 feet

Date not indicated, a stone was found at corner and an iron was set in its location.

In October 1975, the DNR Bureau of Engineering visited the area of the corner and found a 3/4" diameter iron rod. Searched for and found record ties as shown. The iron rod was found to be 2645.91 feet from the north quarter corner of Section 1.

Accept the iron rod as the location of the corner.

Traverse information is available from the DNR Bureau of Engineering.

74hab